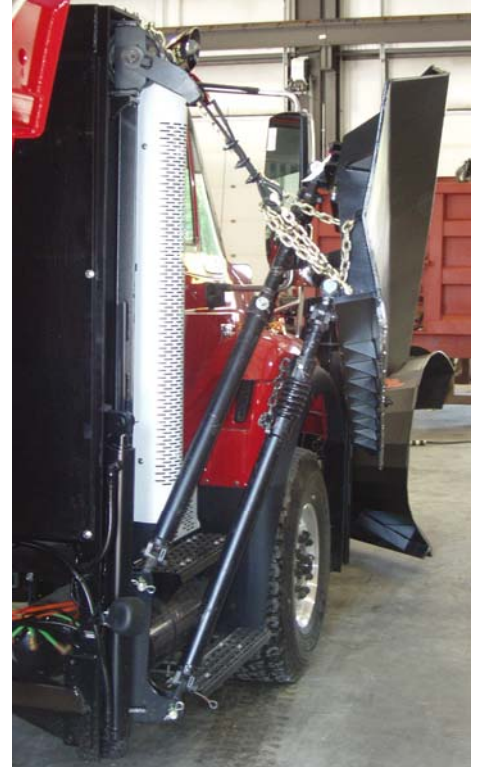


H610 Hydraulic Wings For Trucks

VIKING-CIVES (USA) Heavy Duty H610 wing attachments can be installed on a wide variety of trucks. VIKING engineers have reduced unnecessary weight for more efficient operation and increased payloads.



Features:

- Truck attachments are designed for years of trouble free service.
- Front post design provides optimum operator visibility with choice of 40", 66" or 96" lifts. (66" Shown)
- Designed for optimum performance during widening or benching operations.
- Adaptable to all VIKING wings (11' - 14') past or present.
- Available with VIKING FULL-TRIP hinge and wing arm kit or trip edge.

VIKING-CIVES (USA) Heavy-Duty Snow Removal Equipment

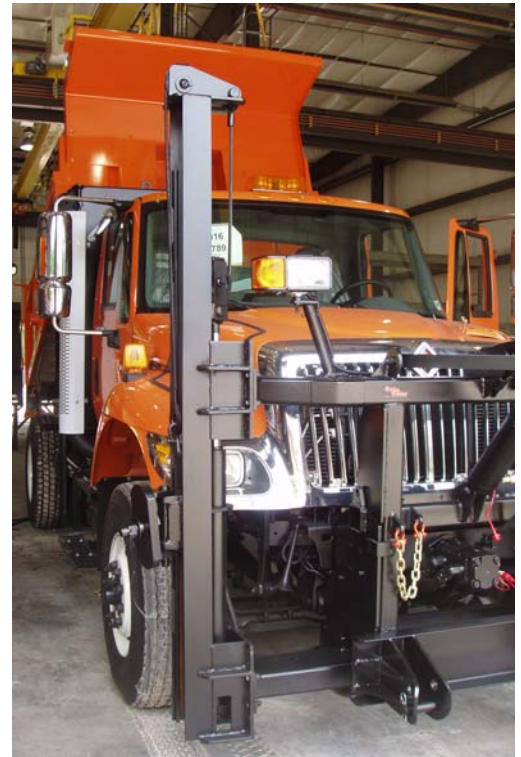
is designed for durability and long lasting performance. VIKING EQUIPMENT is "over-engineered" to compensate for the toughest snowplowing conditions. VIKING uses a proven design with the application of sound engineering and structural principles, resulting in the finest equipment available.

VIKING engineered H610 wings fold in tight to the cab. VIKING hydraulic wings are capable (depending on your truck chassis and equipment) of benching to a height of 48" (72" with telescopic 3 1/2" x 57" Hi-Rise rear slide cylinder). VIKING rear slide cylinders anchor at the bottom of the rear mast so to protect piston rods during shoulder operations. VIKING Hi-Rise telescopic 3 1/2" x 57" cylinder eliminates over-head obstruction experienced with conventional Hi-Rise cylinder designs.

VIKING-CIVES H610 Cable Rear Mast



VIKING-CIVES (USA) Rear mast is available with 33" or 57" rear mast slide cylinder. Rear mast is secured to both sides of the chassis frame. The H610 Rear Mast includes valve and cylinder enclosures with a choice of steel or light weight polymer covers.



VIKING-CIVES Front Post Available in All Hydraulic or Cable and Sheave Design

VIKING-CIVES (USA) heavy-duty, 8" I-beam front mast is standard. Choice of 3" x 20", 3" x 33" or 3" x 48" DA cylinder with either cable or direct attachment to wing slide provides lift for the front of the wing. Its free floating design prevents down pressure from accidentally being applied. The front post can be easily removed during summer months to reduce weight on the front axle. Cable masts provide lift equal to twice the cylinder stroke, because the connection is reeved (ie: 40", 66" or 96").

REAR MAST: 10" Channel or 12" Channel

RESERVOIR: 40 gal Phosphate Coated Steel

REAR WING CYL.: 5" x 18" SA in rear enclosure

FRONT MAST: 8" I Beam

FRONT WING CYL.: 3" x 33" DA, 3" x 20" or 3" x 48" at Front Mast*, or 4" x 14" SA in rear enclosure

REAR SLIDE CYL. WING ARMS: 3" x 33" DA or 3 1/2" x 57"

VALVE: Open Center - Stack Type 40 g.p.m. (2500 p.s.i.)

Note: Because of the variety of chassis available, please consult your nearest VIKING dealer for the right wing length for your application. Wings are available with either full trip or trip edge design.

Note: Specifications are subject to change without notice. Use only VIKING authorized replacement parts and accessories to assure optimum performance and reliability.

Viking-Cives (USA)
14331 Mill Street
Harrisville, NY 13648
(315) 543-2321
Fax (315) 543-2366

Viking-Cives of WNY
2917 Judge Road
Oakfield, NY 14125
(585) 948-5051
Fax (585) 5452

Viking Cives of Maine
40 Coles Crossing
Sidney, ME 04330
(207) 602-9519
Fax (207) 547-3343

